

The Impact of Drug Addiction on Mental Health and Cognitive Functioning

by Robert Alexander Center | Aug 6, 2023 | Blog



Drug addiction is a complex condition that affects individuals both physically and psychologically. It can lead to significant impairments in mental health, which then further contributes to negative changes in cognitive functioning. To begin understanding the impact drug addiction has on an individual's mental health and cognitive functioning, it's important to take a look at its physical effects, as well as the psychological aspects associated with it.

In this blog post, we will be discussing how all these various aspects may combine together culminating into an overall effect on mental health and cognitive functioning adversely affected by substance use disorder (also referred to as drug addiction).

An Overview of Drug Addiction and Its Effects on Mental Health

The consequences of addiction extend far beyond just the physical effects of drug use. Alarmingly, addiction has a direct and profound impact on an individual's mental health. The brain's chemistry is altered by drug use, leading to changes in mood, anxiety levels, cognition and behavior.

As the addiction takes hold, an individual's mental health may deteriorate further. This can lead to depression, anxiety, paranoia, and psychosis. It's important to understand the insidious nature of addiction, as well as the impact it can have on a person's mental and emotional well-being. Only by doing so, can we hope to combat this pervasive issue and help those struggling to overcome this debilitating condition.

The Impact of Drug Addiction on Cognitive Functioning

Drug addiction can take a devastating and lasting toll on cognitive functioning. As research has uncovered, drug use can impact nearly every area of the brain, from memory and attention to decision-making abilities and even basic motor skills. The effects of addiction on cognitive functioning can be particularly pronounced in people who have been using drugs heavily or regularly for an extended period of time.

Over time, addiction can rewire the brain's neural pathways, making it much harder to break free from the vicious cycle of drug use and abuse. Ultimately, the negative impact of drug addiction on cognitive functioning can have serious, far-reaching consequences for individuals, their families, and society as a whole.

Understanding the Link Between Drug Abuse and Mental Illness

While it's not always clear which comes first, one thing is certain: untreated mental illness can make drug abuse much more likely, and drug abuse can exacerbate the symptoms of mental illness. Studies have shown that drug abuse can increase the likelihood of developing mental health problems, and can even cause some mental health issues to develop earlier in life.

It's a vicious cycle that can be difficult to break, but with proper treatment for both the underlying mental health condition and the drug abuse itself, recovery is possible. Understanding the link between drug abuse and mental illness is crucial for anyone looking to help themselves or a loved one struggling with these issues.

How to Recognize Signs of Substance Abuse and Early Intervention Strategies

Substance abuse can have serious consequences, both physically and mentally. That's why it's important to know how to recognize the signs of substance abuse in yourself or in others. Some common signs include:

- Changes in physical appearance and hygiene levels
- Irritability and mood swings
- Erratic or risky behavior, such as driving under the influence of drugs or alcohol
- Neglecting responsibilities due to drug use

If you notice these signs, it's important to intervene early and seek help. There are several early intervention strategies that can be effective, such as:

- Reaching out and providing support to the individual
- Being honest, but non-judgmental when discussing substance abuse
- Encouraging them to seek treatment from a qualified professional
- Finding community resources that provide assistance for people with addiction

Early intervention can lead to a better chance of recovery and a healthier future.

Treatment Options for Drug Addiction and Their Effectiveness

Drug addiction is a complex and devastating disease that affects millions of people worldwide. However, there is hope for those struggling with drug addiction. [Treatment options](#) are available, including:

- Medication-assisted treatment (MAT)
- Behavioral therapies, such as cognitive behavioral therapy and dialectical behavior therapy
- Support groups, such as Alcoholics Anonymous and Narcotics Anonymous
- Cognitive remediation therapy (CRT), which is an evidence-based approach to help people with addiction improve their cognitive functioning

These treatments work by helping individuals learn coping skills, addressing underlying issues, and managing withdrawal symptoms. While no one treatment is guaranteed to work for everyone, research shows that these interventions can be effective in helping individuals achieve and maintain their recovery.

By utilizing evidence-based treatments, individuals have a better chance of overcoming the challenges that drug addiction presents and leading a healthier, happier life.

Contact Robert Alexander Center for Recovery Today

Many people suffer from drug addiction but do not seek help due to lack of information or access to treatment options. It is important for individuals to become educated on the effects of drug addiction in order to avoid potential risks it may cause.

If you feel that you may be struggling with a substance use disorder, [contact Robert Alexander Center for Recovery today](#) for more information regarding proper treatment for your circumstances. You don't have to continue struggling alone – get the help you need today.



The Robert Alexander Center for Recovery is a brand new, state of the art addiction treatment center in Kentucky, offering evidence-based treatment for substance abuse.

Site Map

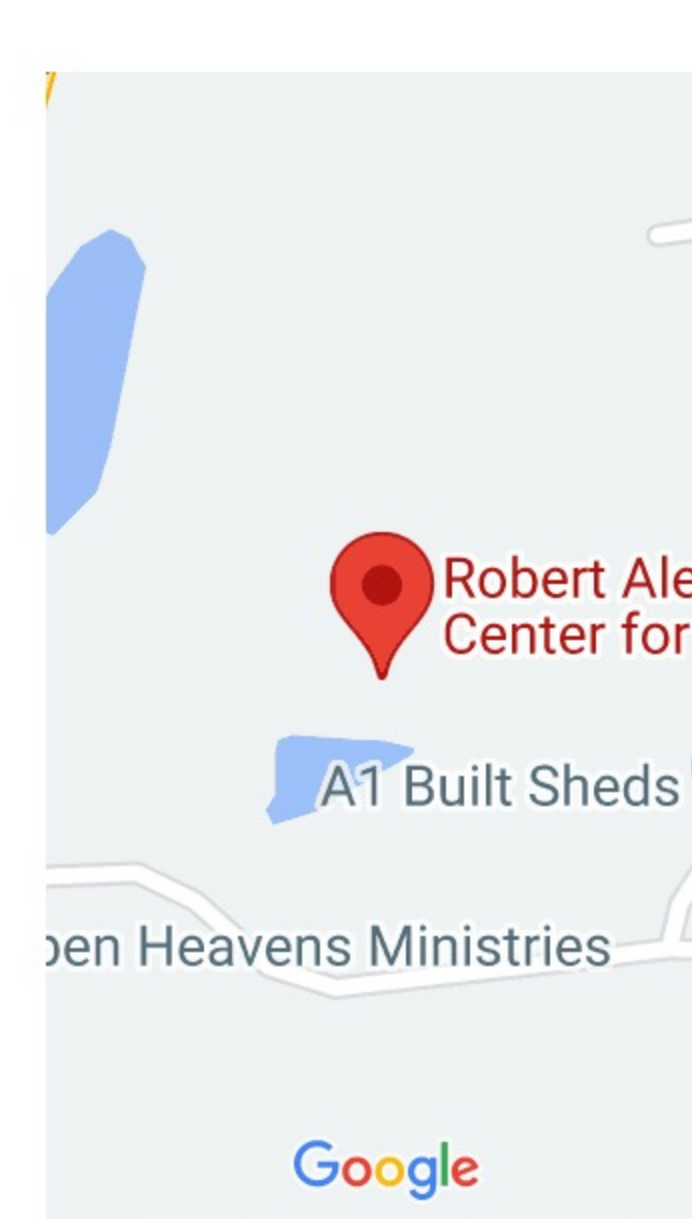
- [Home](#)
- [Tour](#)
- [About](#)
- [Admissions](#)
- [Blog](#)
- [Privacy Policy](#)

Treatment Solutions

- [Detoxification](#)
- [Residential](#)
- [Partial Hospitalization](#)
- [Outpatient Programs](#)
- [Aftercare & Alumni](#)

Get In Touch

130 Hope Street
 Mount Washington,
 Kentucky 40047



Addictions

- [Alcohol Abuse](#)
- [Opioid Addiction](#)
- [Herion Addiction](#)
- [Benzo Addiction](#)
- [Cocaine Addiction](#)
- [Crystal Meth Addiction](#)
- [Drug Addiction](#)
- [Alcoholism](#)

About

- [About](#)
- [Media & Videos](#)
- [Last Articles](#)
- [Careers](#)

Areas We Serve

- [Louisville, Kentucky](#)
- [Lexington, Kentucky](#)
- [Bowling Green, Kentucky](#)
- [Corbin, Kentucky](#)
- [Richmond, Kentucky](#)
- [Cincinnati, Ohio](#)
- [Nashville, Tennessee](#)

Who We Help

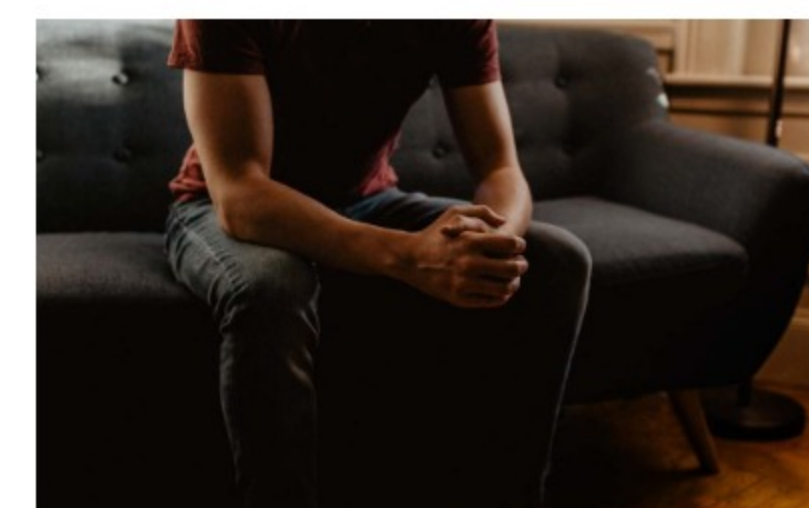
- [Men](#)
- [Women](#)
- [Professionals](#)
- [LGBTQIA+](#)
- [College Students](#)

Treatment Programs

- [30 Day Drug Rehab Program](#)
- [60 Day Drug Rehab Program](#)
- [90 Day Drug Rehab Program](#)

 Search


[Recognizing Alcoholism Symptoms in High-Functioning Adults](#)



[Intensive Outpatient Program For Drug Addiction Treatment](#)



[Crafting a Reentry Strategy Following Successful Alcohol Abuse Rehabilitation](#)



[Achieving Lasting Sobriety: Tips for Setting Goals Post-Rehabilitation Treatment](#)



[Choosing the Right Rehab Treatment: Comparing Outpatient and Inpatient Options](#)

Key Resources

- Home
- Tour
- Treatment
 - Detox
 - Residential
 - Partial Hospitalization
 - Intensive Outpatient
 - Outpatient
 - Family Program
 - Aftercare Program
- Reviews
- About
- Admissions