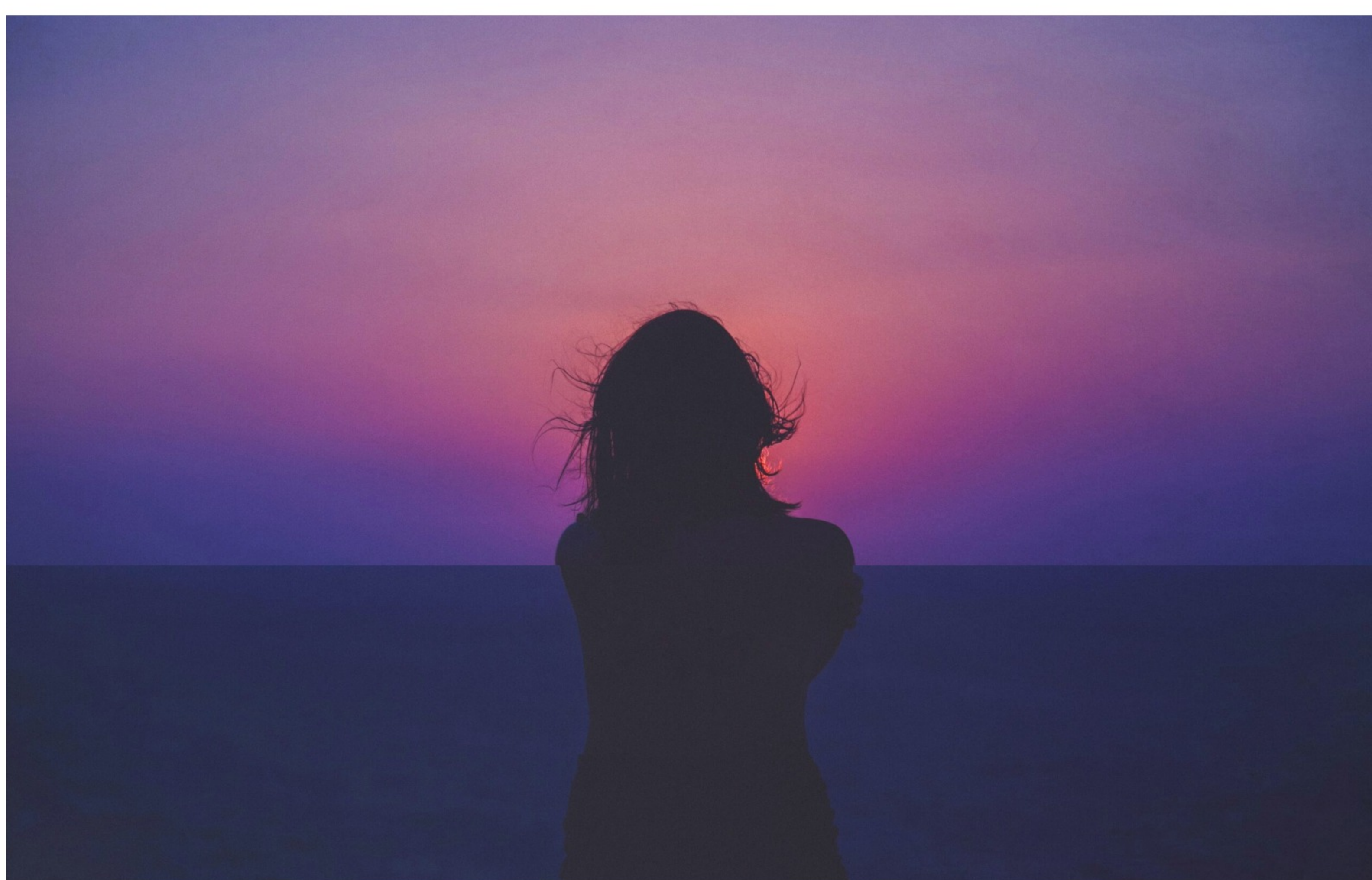


Klonopin Addiction: Detecting Signs and Symptoms

by Robert Alexander Center | May 4, 2023 | Blog



Klonopin, or clonazepam, is a medication in the benzodiazepine chemical class used to treat anxiety and panic disorder. If misused or abused, it can be highly addictive and have dangerous effects on one's health.

It is important to recognize the warning signs of addiction so that drug abuse can be addressed as soon as possible. In this blog post, we'll discuss common symptoms of Klonopin addiction and ways to accurately detect them for those who may be at risk of misuse and dependency issues.

We'll also provide some tips for how individuals struggling with substance use disorders can begin their journey toward recovery from Klonopin dependence.

Understanding Klonopin Use and Abuse

Klonopin is a [benzodiazepine](#), which means it works by enhancing the effects of the neurotransmitter GABA in the brain. This can cause feelings of relaxation and euphoria, but misuse can quickly spiral into dangerous territory.

Understanding the dangers of Klonopin abuse is crucial for anyone who takes this medication, whether they are using it for legitimate medical purposes or not. It is important to follow the prescribed dosage and only take Klonopin as directed by a licensed medical professional to avoid the risk of addiction and other serious consequences.

Signs of a Klonopin Addiction

Signs of a Klonopin addiction can include:

- Taking Klonopin more often or in higher doses than prescribed
- Experiencing withdrawal symptoms when stopping Klonopin use
- Neglecting responsibilities in order to use Klonopin
- Continuing to use Klonopin despite negative consequences
- Feeling unable to quit using Klonopin

If you or someone you know is experiencing these symptoms, it's important to [seek professional help](#). Recovery is possible with the right support and treatment.

Indicators of a Tolerance to Klonopin

Tolerance is a phenomenon in which the body adapts to the presence of the drug, leading to a diminished response over time. Symptoms of Klonopin tolerance may include the need for higher doses to achieve the same results, a decrease in overall effectiveness, and the onset of withdrawal symptoms if the medication is stopped abruptly.

If you or someone you know is showing signs of Klonopin tolerance, it is important to speak with a healthcare professional to discuss alternative treatment options.

How to Determine if Someone Is Taking Too Much Klonopin

While Klonopin can be an effective treatment for certain conditions, it is important to ensure that patients are not taking too much of the drug. Signs that someone may be taking too much Klonopin include drowsiness, confusion, slowed breathing, and even unconsciousness.

It is important to speak with a doctor if these symptoms are exhibited, as they may require medical attention. Monitoring Klonopin intake and recognizing signs of abuse are important steps in ensuring safe and effective treatment.

Potential Complications of Klonopin Abuse

Klonopin taken in large doses or for an extended period can become [highly addictive](#) and can lead to potential complications. One complication associated with Klonopin abuse is respiratory depression, where the user's breathing slows down to a dangerous level.

Another potential complication is the development of seizures, as abrupt cessation of Klonopin after prolonged use can cause the brain to become hyperactive. Ultimately, it is important to [seek professional help](#) if you or a loved one is struggling with Klonopin abuse to avoid these and other potential long-term effects.

Contact Robert Alexander Center for Recovery Today

Klonopin addiction is a dangerous condition that can lead to serious consequences if left untreated. If you or someone you know is showing signs of Klonopin addiction, it is important to seek professional help immediately.

At the Robert Alexander Center for Recovery, we offer evidence-based addiction treatment services that are tailored to meet your unique needs. We strive to provide an emotional and therapeutic safe haven where space can be held for healing and insight.

As with any chronic disorder, recovery from Klonopin addiction requires diligent effort and commitment, but our team is here to ensure the journey isn't traveled alone. Please [contact us](#) today and get on the road to personal wellness and empowerment.

Together, we will make a difference in your life and help you reach your full potential in sobriety.



The Robert Alexander Center for Recovery is a brand new, state of the art addiction treatment center in Kentucky, offering evidence-based treatment for substance abuse.

Site Map

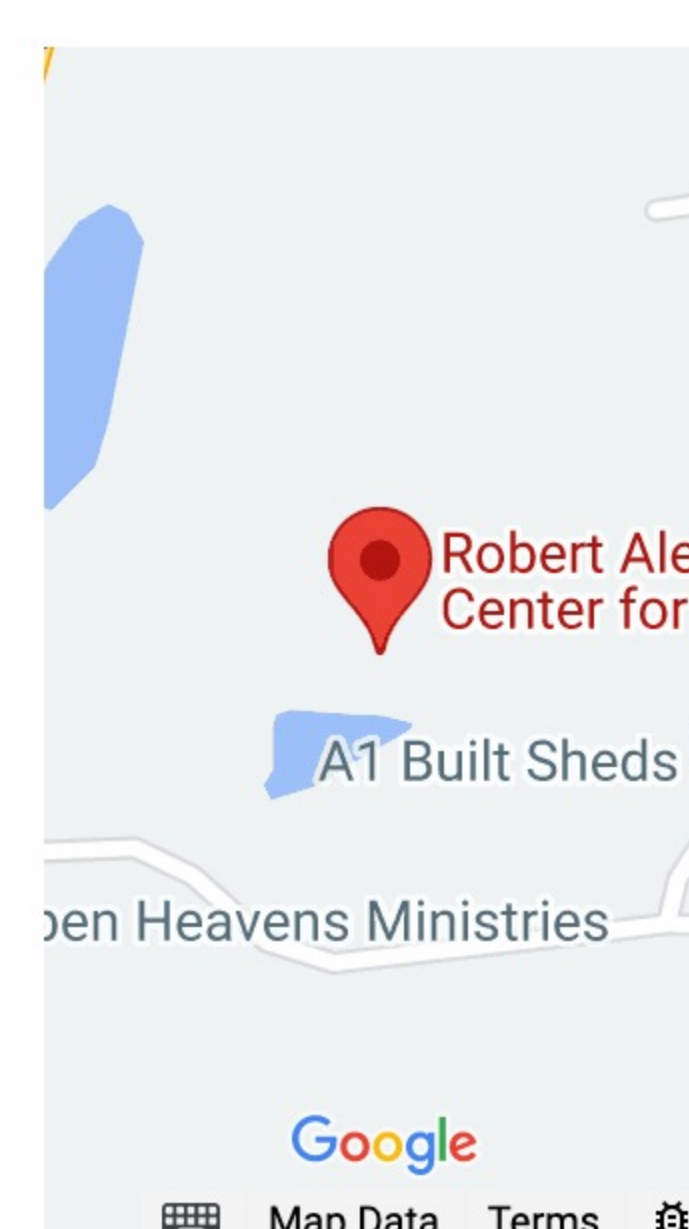
- [Home](#)
- [Tour](#)
- [About](#)
- [Admissions](#)
- [Blog](#)
- [Privacy Policy](#)

Treatment Solutions

- [Detoxification](#)
- [Residential](#)
- [Partial Hospitalization](#)
- [Outpatient Programs](#)
- [Aftercare & Alumni](#)

Get In Touch

130 Hope Street
Mount Washington,
Kentucky 40047



Addictions

- [Alcohol Abuse](#)
- [Opiod Addiction](#)
- [Herion Addiction](#)
- [Benzo Addiction](#)
- [Cocaine Addiction](#)
- [Crystal Meth Addiction](#)
- [Drug Addiction](#)
- [Alcoholism](#)

About

- [About](#)
- [Media & Videos](#)
- [Last Articles](#)
- [Careers](#)

Areas We Serve

- [Louisville, Kentucky](#)
- [Lexington, Kentucky](#)
- [Bowling Green, Kentucky](#)
- [Corbin, Kentucky](#)
- [Richmond, Kentucky](#)
- [Cincinnati, Ohio](#)
- [Nashville, Tennessee](#)

Who We Help

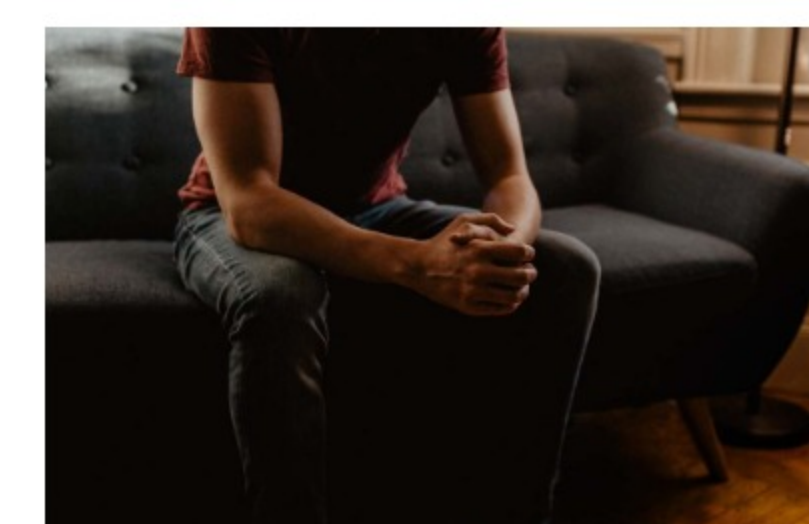
- [Men](#)
- [Women](#)
- [Professionals](#)
- [LGBTQIA+](#)
- [College Students](#)

Treatment Programs

- [30 Day Drug Rehab Program](#)
- [60 Day Drug Rehab Program](#)
- [90 Day Drug Rehab Program](#)



[Recognizing Alcoholism Symptoms in High-Functioning Adults](#)



[Intensive Outpatient Program For Drug Addiction Treatment](#)



[Crafting a Reentry Strategy Following Successful Alcohol Abuse Rehabilitation](#)



[Achieving Lasting Sobriety: Tips for Setting Goals Post-Rehabilitation Treatment](#)



[Choosing the Right Rehab Treatment: Comparing Outpatient and Inpatient Options](#)

Key Resources

[Home](#)

[Tour](#)

[Treatment](#)

[Detox](#)

[Residential](#)

[Partial Hospitalization](#)

[Intensive Outpatient](#)

[Outpatient](#)

[Family Program](#)

[Aftercare Program](#)

[Reviews](#)

[About](#)

[Admissions](#)