



The Best Rehab for Methamphetamine Addiction In Kentucky

Meth is a very easy to obtain drug of choice for many users, which is both highly addictive and can cause a number of horrible side effects. It is a relatively inexpensive drug to get hold of, which often means it is popular among any type of drug user. Meth itself provides the user with feelings of euphoria, including increased energy levels but this is short lived and cannot be sustainable and most often it is some type of clinic intervention that helps users get their lives back on track. For addition and recovery, going to the best recovery center will help their recovery.

What To Look Out For With Methamphetamine Use

Methamphetamines may give a quick burst of energy but long term, they say the life out of the user and can display many physical and psychological problems. It may be known as a very dangerous drug on the market but it doesn't stop people from using it, despite the signs and symptoms that come with consuming it. These signs and symptoms are ones to look out for if you suspect someone is using.

Psychological issues: loss of interest in life may be the first, **losing sight of their career goals or any type of work as well as friendships, relationships and hobbies.** The longer they take meth, the worst this may be. It can affect the mind and the mood of the user, which means there may be changes in their behavior such as: hyperactivity, paranoia, twitching ticks, and irritability. This may be accompanied by some aesthetic problems such as poor skin, weight loss, burns on fingers and lips, rotting teeth, and outbursts.

Where did Methamphetamine begin?

Methamphetamines were developed in the early 20th century. Originally they were used as nasal decongestants as they are a type of stimulative drug. They could only be used on prescription and it has been known to use ADHD. It can be effective in some instances mostly because it is given in much lower dosage than drug users. This is why it has a negative effect on drug users in the long term.

Dangerous addictive substance

Methamphetamine is a highly addictive substance. Perhaps you have noticed the changes that it has caused among your family and friends. The mood swings and outbursts may have become all too much and their appearance may have diminished to unrecognizable which makes life much more difficult to bear. However, there is help on the horizon.

Detox & Recovery

There are successful treatments for this addition and cognitive and behavioral modification therapies are chosen first. At **Robert Alexander Center** For Recovery, all users will be assessed relating to their addiction, also looking at helping them with coping mechanisms and learning to live with stress and anxiety. Our programs are suited to any type of addict to ensure that we create a successful outcome. Each case is different and we treat every patient as an individual.

For more information please browse through our website to see how we can help change a life, for the better.



Facebook

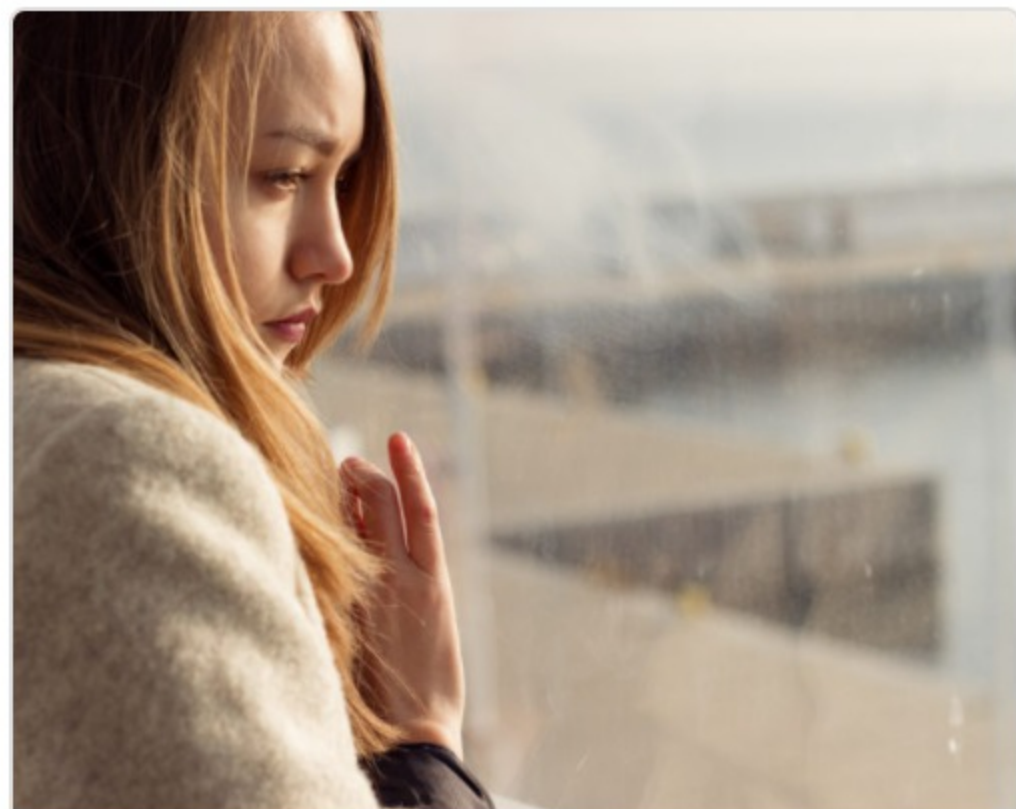


Twitter



LinkedIn

Recommended Posts



How Long Does Heroin Last in Your System?



How To Detox From Cocaine Safely



What Are The Long Term Effects Of Opioid Addiction



Diving Into The Genetic Component To Alcoholism



P: 1-844-328-8406

The Robert Alexander Center for Recovery is a brand new, state of the art addiction treatment center in Kentucky, offering evidence-based treatment for substance abuse.



Navigation

[Home](#)

[About](#)

[Tour](#)

[Admissions](#)

[Blog](#)

Treatment Solutions

[Detoxification](#)

[Residential Inpatient](#)

[Partial Hospitalization](#)

[Outpatient Programs](#)

[Aftercare & Alumni](#)

Get In Touch

130 Hope Street Mount
Washington, Kentucky 40047



Interpreters Available